



FELLING TRAILERS, INC.
 1525 Main Street South, Sauk Centre, MN 56378
 Phone: 800-245-2809 - www.felling.com



2600-F

ATTENTION: Mack Keay
 Ship To:
 Ocean Trailer
 9076 River Rd
 Delta, British Columbia V4G 1B5

Customer Info
 Phone: 604-940-0210
 FAX:
 Bill to:
 C. Keay Investments
 9076 River Road
 Delta, British Columbia V4G 1B6

Reference No: 227772GKK
 Customer Unit/Stock:
 Phone: 604-920-0210
 FAX:

PO# 89455
 Quote Date 11/15/2021
 Order Date 11/17/2021
 Order Status Ordered

Sales Person
 Gary Knudsen

Appx Completion
 81 (weeks) 06/07/2023
Order Charge
 FT-80-3 OTR-H Semi-Commercial
Product ID
Serial No

Shipping Notes: Quoted as FOB Sauk Centre, MN (no freight included)

Drawing No: OVL Length: 53
 Copy No: Appx Wgt +/-: 16,500 lbs
 Part No:
 MRP No:
 Smart No: 03753

Notes: 41' max wheel base, 35% of wheel base rear overhang, Canada Legal,
 Includes 5 year warranty on wheel seal package

PO# 89455-89460

Item Type	Options	Description	Appx Qty	Unit	Total Qty
Base Trailer		FT-80-3 OTR-H		Each	0
Load Capacity		80,000 lbs Distributed, 52,000 lbs in 10 ft, 50,000 lbs in 4 ft		Std	1
Upper Deck		90° Neck		Feet	10
Deck Length	✓	Deduct Deck Length	-1	Feet	37
Frame Type		Pierced 4" (80K) Jr I-Beam Crossmembers, 12" on Center		Std	1
Frame Type		Wheel Boxes		Std	3
Frame Type	✓	**Custom** - (4) additional pair of side rail supports		Opt	4
Beavertail	✓	Self Cleaning 3" x 2" Steel Angle Iron Beavertail		Feet	5
Deck Type		Aplong, 1 1/8"		Std	1
Ramps, Rear	✓	5' x 20" Self Cleaning 3" X 2" Angle Iron, Spring Assisted		Pair	1
Ramps, Acc	✓	4" X 4" Timber Pockets on Inside of Ramps		Pair	4
Ramps, Acc	✓	2-Way Spring Asslst		Opt	1
Ramps, Acc	✓	6' x 14" Slide In Aluminum Ramps, stored under upper deck Do not exceed 10K per axle		Pair	1
Ramps, Acc	✓	Double X bracing on the bottom of the ramps to drive over		Opt	1
Ramps, Acc	✓	**Custom** - Fully enclosed upper deck ramps trays		Opt	1
Appx Deck Height		59" Upper Deck, 41" Main Deck, Loaded		Inches	1
Width	✓	9' Wide OD, 8.5' Tread Width	-1	Feet	52
Tie Downs		Rub Rail & Stake Pockets with Double Pipe Spools		Std	1
Tie Downs	✓	3 Bar Low Profile Winches (weld on) with J-Hook across from Winch Staggered		Each	24
Tie Downs	✓	Stake Pockets (2) additional pair on each side behind the drop, total of 3 in a row 2" apart		Each	4
Tie Downs	✓	Tarp Hooks, under mount where possible Weld Appx 2' apart, 4 on each end		Each	60
Brakes		Air, ABS 2S/1M, Meritor WABCO (Parking brakes on all axles)		Std	1
Brakes, Acc	✓	Steel Brake Dust Shields - 22.5"		Axle	3

Item Type	Options	Description	Quantity	Unit	Total Qty
Brakes, Acc	✓	S-Cam Shaft Enclosures, Big Brake		Axle	3
Axles		25K Oil Bath		Std	3
Axles, Acc	✓	SPIF-RTAC Width (Canada Legal) Small Brake		Axle	3
Axles, Acc	✓	25K Hendrickson ILO Standard Meritor		Axle	3
Axles, Acc	✓	**Custom** 5 year Seal and Bearing package (HXL5)		Opt	3
Suspension	✓	60" Spread, Hendrickson ILO Ridewell 260		Axle	3
Suspension	✓	Weather Proof Polyurethane Box for air controls and includes pressure gauge		Opt	1
Tires & Wheels		255/70R 22.5 H, 10 Bolt [22.5 x 8.25] Hub Pilot		Std	12
Hitch Type		Semi King Pin [S] with 18" Setback, 48" Height		Std	1
Jack		200,000# Twin 2 Speed, Holland Mark V (62,500 lb Lift Capacity)		Std	1
Plug		7 Pole Semi Socket		Std	1
Lights		LED Lights (Peterson), (3) lights per side Deck, (3) per side Tailboard, Sealed Wiring Harness (Sealco)		Std	1
Lights	✓	Amber LED Strobe Lights, Switched and Mounted in Tailboard, replaces 2 center tail lights		Opt	1
Lights	✓	Pull Out Wide Load Lights, extends 18" with 2.5" Amber forward, Red rearward lights (all four corners)		Opt	1
Lights	✓	Severe Condition Wiring Package - Closed Back Grommets, Metal Conduit to Side & Rear Lights and Enclosed Tail-lights & Tri-Lights		Opt	1
Trailer Color		Felling Black # CCA945378 (White Felling Decal)		Std	1
Stripe Color		White		Std	1
Standard		Ready for a 60" Chain Box on both sides, located behind dollies		Std	1
Standard		Document Holder		Std	1
GVWR		95,000 lbs		Std	1



MSO's are not released until
 Payment Received

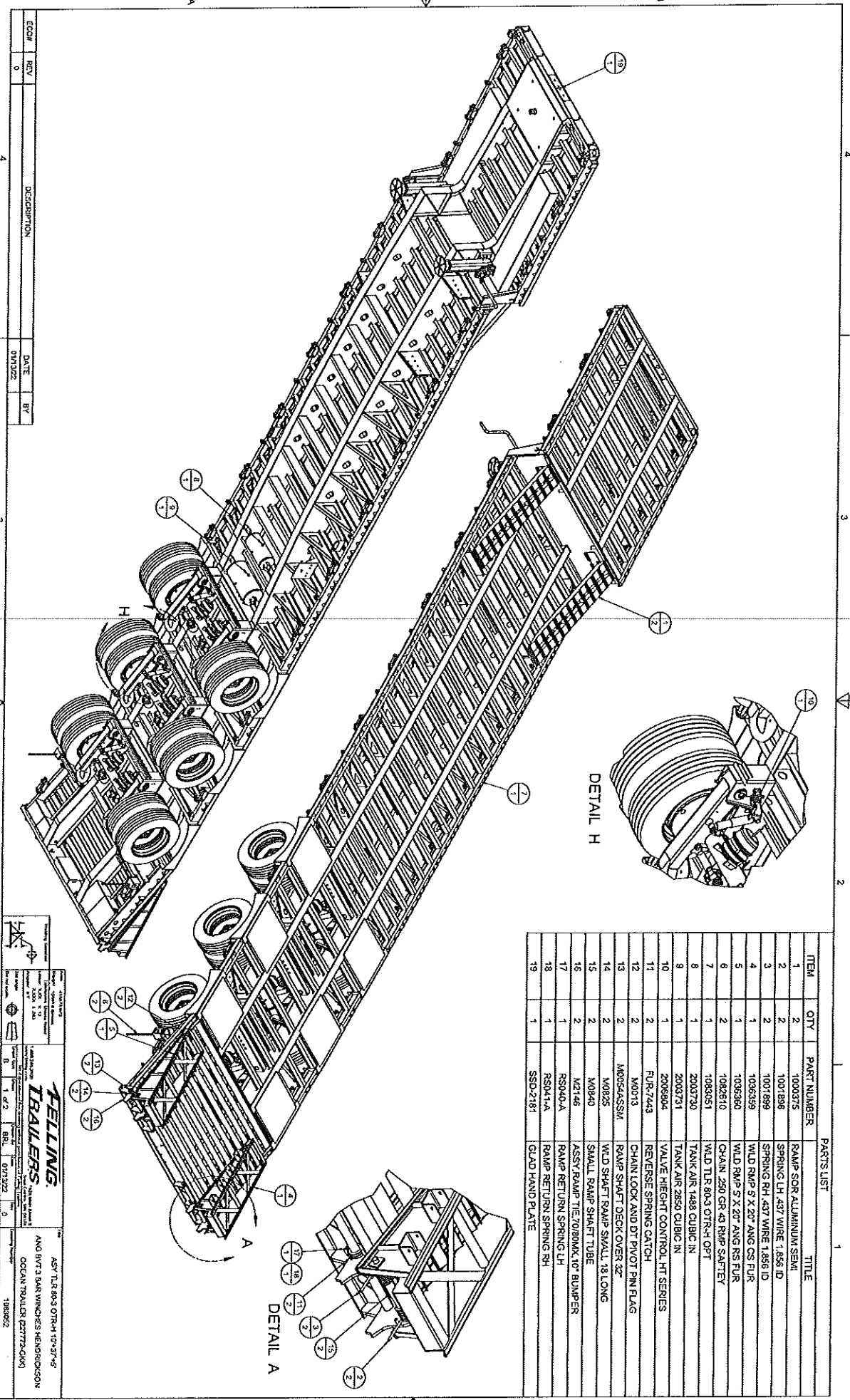


****FOB IF NO FREIGHT charged****

**** FET Tax may apply on 26,000 lb GVWR .
 and above ****

Please sign and date your acceptance of this quote:

****PRICING MAY BE SUBJECT TO MARKET ADJUSTMENT AT TIME OF INVOICE****



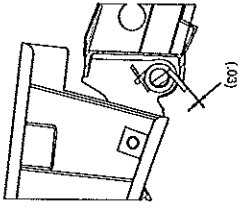
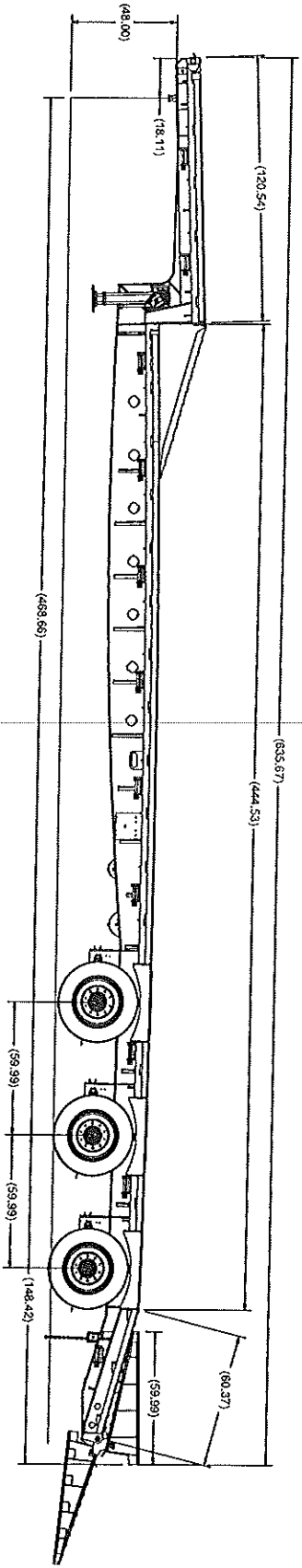
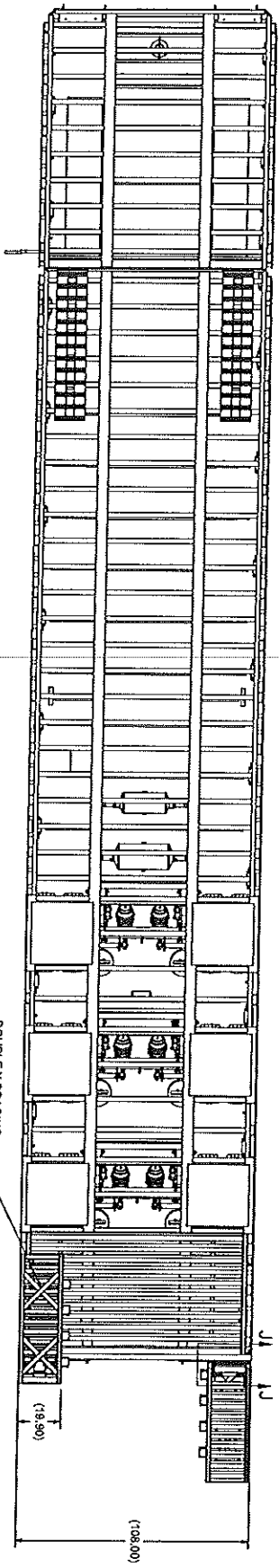
PARTS LIST

ITEM	QTY	PART NUMBER	TITLE
1	2	1000375	RAMP SOR ALUMINUM SEMI
2	2	1001898	SPRING LH 437 WIRE 1.856 ID
3	2	1001899	SPRING RH 437 WIRE 1.856 ID
4	1	1036939	WLD RWP 5' X 20' ANG CS FUR
5	1	1036930	WLD RWP 5' X 20' ANG RS FUR
6	2	1092910	CHAIN 250 GR 43 RWP SAFETY
7	1	1093051	WLD TR 803 GTR-H OPT
8	1	2003730	TANK AIR 1488 CUBIC IN
9	1	2003731	TANK AIR 2850 CUBIC IN
10	1	2005804	VALVE HEIGHT CONTROL HT SERIES
11	2	FUR-7443	REVERSE SPRING CATCH
12	2	M0013	CHAIN LOCK AND DT PIVOT PIN FLAG
13	2	M055455M	RAMP SHAFT DECK OVER 32"
14	2	M0825	WLD SHAFT RAMP SMALL 18 LONG
15	2	M0840	SMALL RAMP SHAFT TUBE
16	2	M2146	ASSY RAMP TIE 7080MX 40' BLUOPER
17	1	RS041A	RAMP RETURN SPRING LH
18	1	RS041A	RAMP RETURN SPRING RH
19	1	SSD-2181	GLAD HAND PLATE

ECOM	REV	DESCRIPTION	DATE	BY
	0		07/19/22	

FELLING
 TRAILERS
 14800 S. 100th Ave., Suite 100
 Aurora, CO 80015
 Phone: 303.744.1100
 Fax: 303.744.1101
 Email: sales@fellingtrailers.com

ASY TLR 803 GTR-H 10-37-45
 AND BWT 3 BAR WINCHES HENSROCKON
 OCEAN TRAILER (22777-010)
 1488952



ANY CHANGE MADE TO AN EXISTING ORDER AFTER CONFIRMATION WILL BE SUBJECT TO A \$200.00 "CHANGE ORDER FEE" PER CHANGE PLUS THE COST OF THE ORDER/CHANGE. PLEASE REFER TO THE ORIGINAL ORDER/DRAWING TO DETERMINE ACCURACY. THIS DRAWING IS FOR INFORMATION ONLY. ACTUAL TRAILER MAY VARY. CUSTOMER APPROVAL SIGNATURE: _____ DATE: _____

		AND BY T. 3 BAR WINDCHES HENDERSON OCEAN TRAILER (2777-040)	
Model: T3777-040 Length: 32'0" L x 8'6" GVW: 12,000 LBS Gross Weight: 12,000 LBS Max. Axle Weight: 3,500 LBS Max. Trailer Weight: 12,000 LBS	1000 LBS 1000 LBS 1000 LBS 1000 LBS	0 0 0 0	0 0 0 0