

MAC TRAILER OF OKLAHOMA INC

8304 MCKEE INDUSTRIAL RD

DAVIS, OK 73030

Phone: (580) 448-4900

Website: WWW.MACTRAILER.COM

92713 thru 92724

This offer is valid until the printed expiration date, and is subject to change at Manufacturer discretion based on market conditions.

FLATBED				Quote ID # 71335		JOB # 75715		Rev 5	
Customer		OCEAN TRAILER							
Dealer Name		OCEAN TRAILER				Cubic Yards		0	
Quote Date		5/13/22		Quote Expires		6/13/22		Qty 12	
						Weight		10715 lbs. ***	
Dealer Salesman		TYLER VRBAS				Model Code		FB	
Cust P.O. #		92713		Cust Unit #		Plant of Mfg		H	

Model # TNAR53AA0-2024

VIN # 5MAPA5320RH075715

BODY	
FRAME RAIL MODEL	26 IN. (52K)
FRAME RAIL ARCH MODEL	3 1/2 IN.
LOAD PROFILE	MATERIAL, 90K GVWR
LENGTH	53
WIDTH	102
NECK STYLE	SQUARE FRONT, 10 IN. NECK, 102 WIDE
CROSSMEMBER SPACING	18 IN. ON CENTER
BULKHEAD	NONE
SPOOLS AND POCKETS	DOUBLE SPOOLS W/ POCKETS
NAILERS	4 NAILER POSITION
NO. OF STUB CROSSMEMBERS (COIL)	NONE
COIL PLACEMENT STRIPE / DECAL	NONE
(1) FULL WIDTH CROSSMEMBER AT REAR (REAR LOADING)	NONE
REAR FLOOR, THRESHOLD PLATE (REAR LOADING)	NONE
OUTRIGGERS / TAPERED CROSSMEMBERS	NONE
SIDE RAIL WINCH TRACK	DBL. ENTRY T.D. OUT, BOLT ON LL TRACK B.S. BAR B.S.
REAR END STYLE	REAR OPEN (NO CENTER FILLER PLATE)
REAR STEPS	GRIP STRUT STEP
STAINLESS ON REAR END	NONE
EXTREME DUTY BUMPER REINFORCEMENTS	NO
BOLT-ON BUMPER	NO
DOCK BUMPERS	(2) 16 IN. OUTSIDE

LIGHTS	
LIGHT TYPE	GROTE L.E.D. GROMMETS ON SIDES AND FLANGE W/ STAINLESS STEEL SECURITY RINGS ON REAR
LIGHT PANEL	3 LARGE - 3 LARGE - 3 LARGE 000 000 000
STROBE LIGHTS	YES, YELLOW
STROBE LIGHT LOCATION	INSIDE OF THE OUTSIDE CLUSTERS
STROBE LIGHT CONTROLS	TOGGLE IN CONTROL BOX
STD. MARKER LIGHTS	NONE
3/4 IN. PENNY LIGHT MARKER LIGHTS	9 EACH SIDE
(4) 2-FRONT & 2-REAR WIDE LOAD TELESCOPING LIGHTS, WITH SWITCH IN CONTROL BOX.	
MARKER LIGHT LOCATION	STD.
MID-TURNS	(1) PAIR OPEN
WIDE TURN DIRECTIONAL LIGHTS	NONE
BACK-UP LIGHTS	NONE
BACK-UP LIGHT LOCATION	NONE

AUXILIARY CABLE	NONE
REAR AUXILIARY PLUG	NONE

PRIMARY AXLES

MODEL	TANDEM
NO. OF PRIMARY AXLES	2
SUSPENSION	HEND. INTRAAX AANT-23K TP (230 BAGS) W/ HXL-5
NO. OF LIFT KITS	0
PRIMARY AXLE LIFT KIT	NONE
SUSPENSION SLIDER	SINGLE AXLE FRONT SLIDER

FRONT AXLE TO SLIDE TO 122" SPREAD.

AXLE SPACING	61
AXLE SETTING	NOTE ALL AXLE SETTINGS

CANADIAN TAC LEGAL., 41 FT. K.P. TO CENTER OF TANDEM IN CLOSED POSITION.

AXLES	AXLE FOR INTRAAX ONLY
LIFT CONTROLS	NONE
BRAKES	7 IN. XL, W/ 30-30 CHAMBERS
CAM GUARDS	HEND. INTRAAX
HUB AND DRUM	CAST W/ DURALITE HUB HP OB 10 STUD TP, LS, 7 IN.
BRAKE STROKE INDICATORS	NO
TIRES	YOKOHAMA RY023 11R 22.5 16PLY
WHEELS	ALUMINUM HP 22.5X8.25 - ALL POLISHED (XP)

INSTALL INSULATOR DISCS BETWEEN HUB & WHEEL AND BETWEEN WHEELS, 8 INSULATOR RINGS.

PRIMARY AXLE TIRE INFLATION SYSTEM	HENDRICKSON SYSTEM (TIREMAX PRO)
------------------------------------	----------------------------------

LIFT AXLES

NO. OF LIFT AXLES	0
LIFT AXLE SUSPENSION	NONE
LIFT KIT	NONE
LIFT AXLE DISTANCE	N/A
LIFT AXLE	NONE
LIFT AXLE BRAKES	NONE
LIFT AXLE CAM GUARDS	NONE
LIFT AXLE HUB AND DRUM	NONE
LIFT AXLE TIRES	NONE
LIFT AXLE WHEELS	NONE
LIFT AXLE CONTROLS	NONE
LIFT AXLE DUAL AIR SYSTEM FOR MICHIGAN / CANADA	NO
LIFT AXLE AIR TANKS	NONE
LIFT AXLE TIRE INFLATION SYSTEM	NONE

STEERABLE LIFT AXLES

NO. OF STEERABLE AXLES	0
STEERABLE AXLE SUSPENSION	NONE
STEERABLE AXLE DISTANCE	N/A
STEERABLE AXLE TIRES	NONE
STEERABLE AXLE WHEELS	NONE
STEERABLE AXLE CONTROLS	NONE
STEERABLE LIFT AXLE DUAL AIR SYSTEM	NO
STEERABLE AXLE AIR TANKS	NONE
STEERABLE AXLE AIR DRAIN COCK WITH CABLE PULL TO D.S.	NO

CHASSIS

FRAME RAILS	MOVED TO BODY
FRAME RAIL ARCH	MOVED TO BODY
PIN SETTING	24
5TH WHEEL PLATE TYPE	GALVANIZED
5TH WHEEL PLATE	5/16 IN. GR-50, 3/8 KP
5TH WHEEL PLATE HEIGHT	48 IN. HIGH
SUSPENSION CONTROL	BALL VALVE (FULL SUSPENSION DUMP)

GLADHAND / ELECTRIC CONNECTION	FRONT ONLY
LOCATION	
ABS FOR TRAILER	(1) 4S2M MERITOR / WABCO
SLACKS	AUTOMATIC
AXLE LUBRICATION	HXL, SYNTHETIC SEMI-FLUID GREASE
HUBODOMETER	NONE
DUST COVERS	YES
TIRE CARRIER(S)	NONE
DOLLIES - LANDING GEAR - LANDING LEGS	JOST AX-150 - (55,000 lb.) - 10 YEAR ALUMINUM - D.S.

USE ARCTIC GREASE.

REGISTRATION HOLDER	TIGHT SEAL TS0158 DOCUMENT HOLDER (ALUMINUM TUBE)
REGISTRATION HOLDER LOCATION	DRIVERS SIDE NEAR LANDING GEAR
AIR GAUGE / SYSTEM	YES, IN ENCLOSURE - MUST SELECT ENCLOSURE
ENCLOSURE FOR SWITCHES	STAINLESS STEEL
AIR TANKS	ALUMINUM TANK
AIR TANK DRAIN COCK WITH CABLE PULL TO D.S.	NO
STUB FLAPS ON REAR	NONE
ADDITIONAL FLAPS	REAR OF REAR AXLE (1 SET)

TARP

SIDE KIT, SLIDING AND CURTAIN SIDE SYSTEMS	NONE
--------------------------------------------	------

PAINT

HANGERS	GALVANIZED
SUSPENSION COLOR	BLACK SOFT COAT
PIN STRIPING	BLACK (931716)
LANDING GEAR COLOR	BLACK (930248)
MAC MACHINE FINISH LOGOS	BLACK (931716)

ACCESSORIES

NO. OF TOOLBOXES	2
TOOL BOX SIZE	24X24X60 DOUBLE DOOR
TOOL BOX DOOR TYPE	ALUMINUM
TOOL BOX HARDWARE	CAM LOCKS
TOOL BOX LOCATION	BEHIND LANDING GEAR BOTH SIDES

MOUNT LOW ENOUGH TO ALLOW WINCHES TO SLIDE OVER BOX.

ROPE HOOKS (24 IN. SPACING)	NONE
NO. OF 8 FT. DUNNAGE HOLDERS	1
8 FT. DUNNAGE HOLDER TYPE	WITH FLOOR

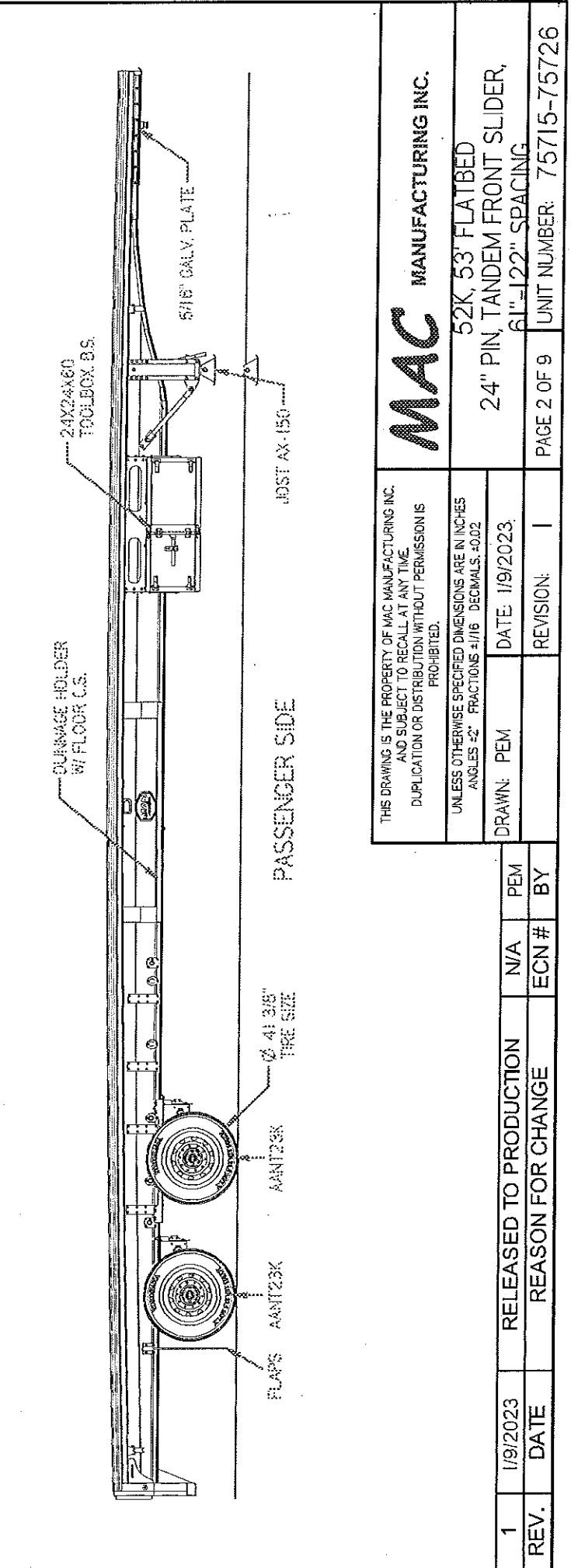
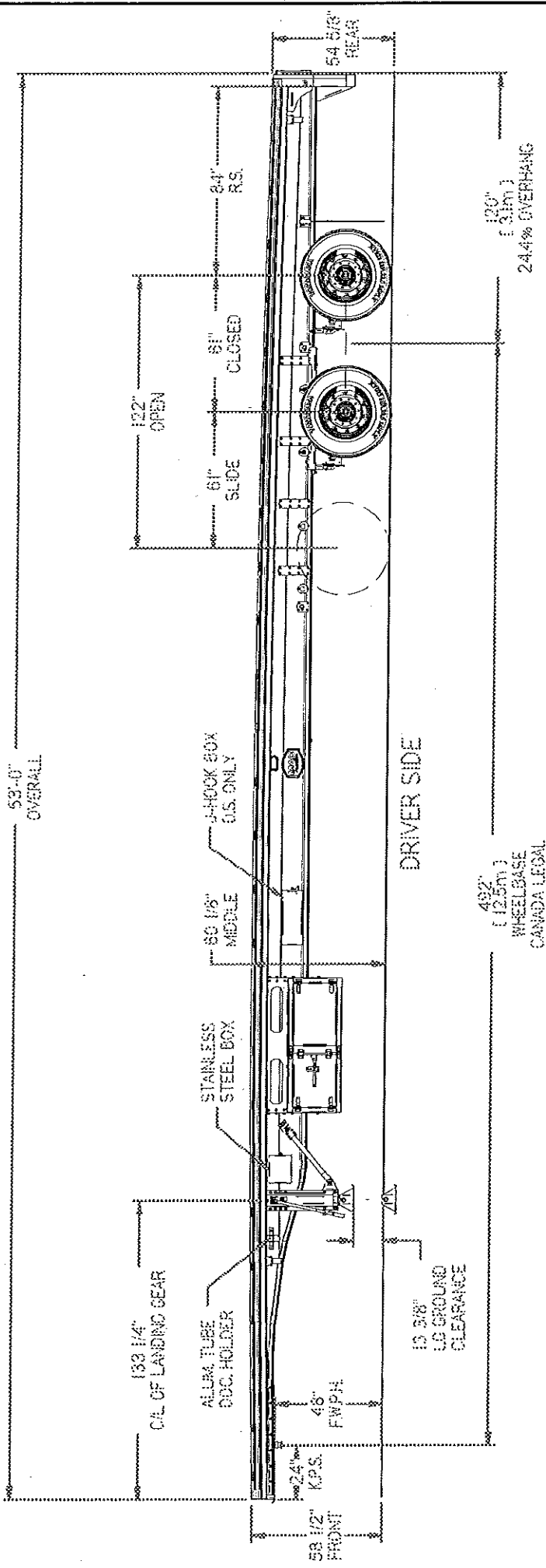
8 ft. dunnage holder with bottom sheet of aluminum w/ drain holes.

8 FT. DUNNAGE HOLDER LOCATION	CURB SIDE ONLY
-------------------------------	----------------

LOCATED FORWARD OF LEAD AXLE OF TRIDEM.

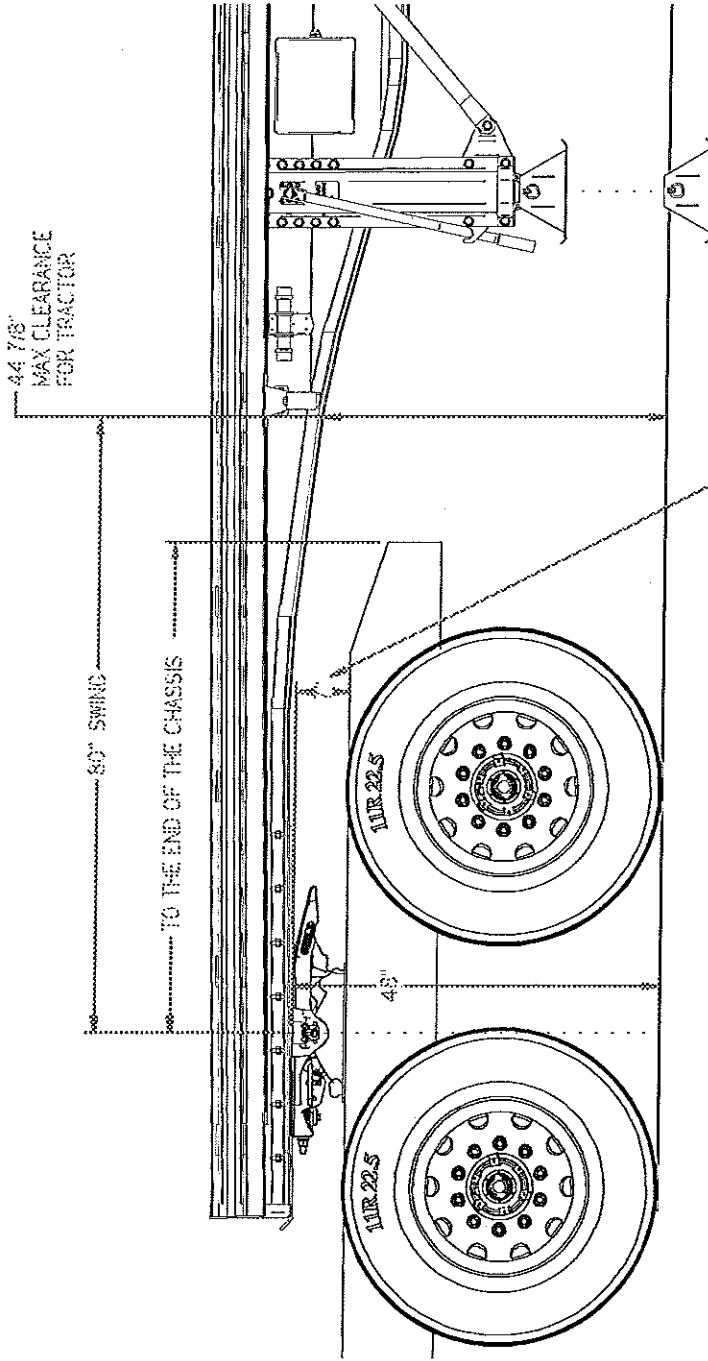
V-RACK	NONE
V-RACK LOCATION	NONE
SIDE TO SIDE BELLY MOUNT DUNNAGE HOLDER	NONE
NO. OF COMBO J HOOK (CHAIN / STRAP) (PAIRS)	8
NO. OF BOLT ON CARGO HOOKS	NONE
J-HOOK STORAGE	BOX STYLE
CHAIN TIE DOWNS BETWEEN EVERY CROSSMEMBERS	NONE
CHAIN TIE DOWNS BETWEEN EVERY OTHER CROSSMEMBERS	NONE
NO. OF CHAIN TIE DOWNS (PER PAIR) (CUSTOMER MUST SPECIFY LOCATION)	NONE
NO. OF D-RINGS - RECESSED IN DECK PER PAIR	NONE
NO. OF GALVANIZED STD. DOUBLE L SLIDING WINCHES	NONE
NO. OF GALVANIZED STD. DOUBLE L LOW PRO SLIDING WINCHES	NONE

NO. OF GALVANIZED STD. DOUBLE L SLIDING LARGE CAP WINCHES	NONE
NO. OF GALVANIZED SIDE MOUNTED FIXED WINCHES	NONE
NO. OF GALVANIZED RECESSED FIXED WINCHES	NONE
NO. OF GALVANIZED 3 BAR SIDE MOUNT WINCHES	NONE
NO. OF GALVANIZED 3 BAR RECESSED WINCHES	NONE
NO. OF GALVANIZED 3 BAR SLIDING WINCHES	NONE
NO. OF GALVANIZED 3 BAR LOW PRO WINCHES	26
(13) D/S & (13) C/S	
NO. OF STD. 4 INCH X 30 FT. WINCH STRAPS WITH FLAT HOOK END	NONE
NO. OF 4 IN. X 30 FT. WINCH STRAPS WITH CHAIN HOOK END	NONE
NO. OF 4 IN. X 30 FT. WINCH STRAPS WITH W/D-RING ENDS	NONE
NO. OF KINDEDYNE STRAP HOOK HOLDERS	NONE
NO. OF ANCRA GLIDELock STRAP HOLDERS	NONE
NO. OF MAC LOW PROFILE STRAP RECEIVERS	NONE
NO. OF SLIDING CARGO HOOK	26
OPPOSITE OF WINCHES	
CONTAINER LOCKS	NONE
NO. OF DECK POCKETS (PER PAIR)	NONE
NO. OF DECK POCKETS WITH POP UPS	NONE
NO. OF LOG POCKETS (PER PAIR)	NONE
NO. OF 1/4 IN. X 3 IN. X 3 IN. X 48 IN. STAKES (PER PAIR)	NONE
NO. OF 1/2 IN. X 3 IN. X 3 IN. X 96 IN. LOG STAKES (PER PAIR)	NONE
FORK LIFT KIT	NONE
MAC STAIRWAY	NONE
WARNING PLACARDS	NONE



THIS DRAWING IS THE PROPERTY OF MAC MANUFACTURING INC. AND SUBJECT TO RECALL AT ANY TIME. DUPLICATION OR DISTRIBUTION WITHOUT PERMISSION IS PROHIBITED.		MAC MANUFACTURING INC.	
UNLESS OTHERWISE SPECIFIED DIMENSIONS ARE IN INCHES ANGLES -2° FRACTIONS 1/16 DECIMALS .002		52K, 53' FLATBED	
DRAWN: PEM		24" PIN, TANDEM FRONT SLIDER, 61"-122" SPACING	
DATE: 1/9/2023		PAGE 2 OF 9	
REVISION: 1		UNIT NUMBER: 75715-75726	

1	1/9/2023	RELEASED TO PRODUCTION	N/A	PEM
REV.	DATE	REASON FOR CHANGE	ECN #	BY



TRACTOR CLEARANCE TO BE MAINTAINED.
LEVEL GROUND, UNLADEN

IF CLEARANCE CANNOT BE MAINTAINED
MAC MUST BE CONTACTED PRIOR TO PRODUCTION

THIS DRAWING IS THE PROPERTY OF MAC MANUFACTURING INC.
AND SUBJECT TO RECALL AT ANY TIME.
DUPLICATION OR DISTRIBUTION WITHOUT PERMISSION IS
PROHIBITED.

UNLESS OTHERWISE SPECIFIED DIMENSIONS ARE IN INCHES
ANGLES ±2 FRACTIONS ±1/16 DECIMALS ±0.02

DRAWN: PEM DATE: 1/9/2023

REVISION: 1

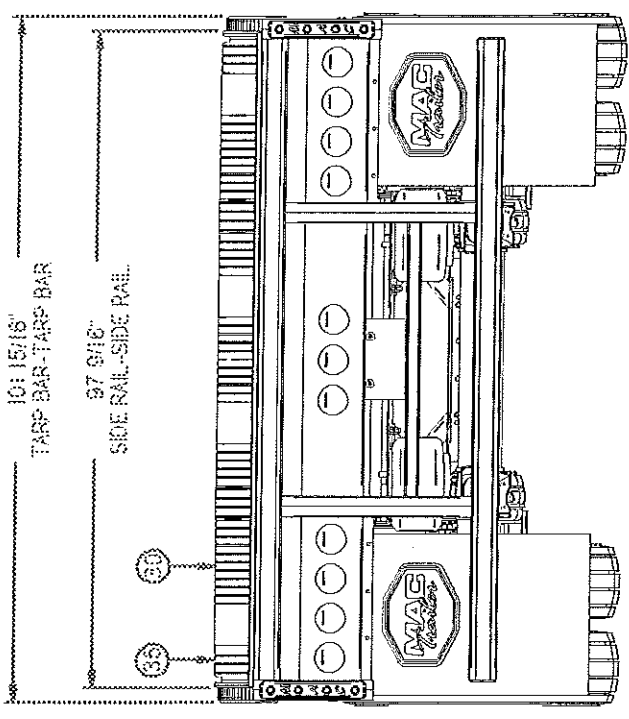
REV.	DATE	RELEASED TO PRODUCTION	N/A	PEM
		REASON FOR CHANGE	ECN #	BY
1	1/9/2023			

MAC MANUFACTURING INC.

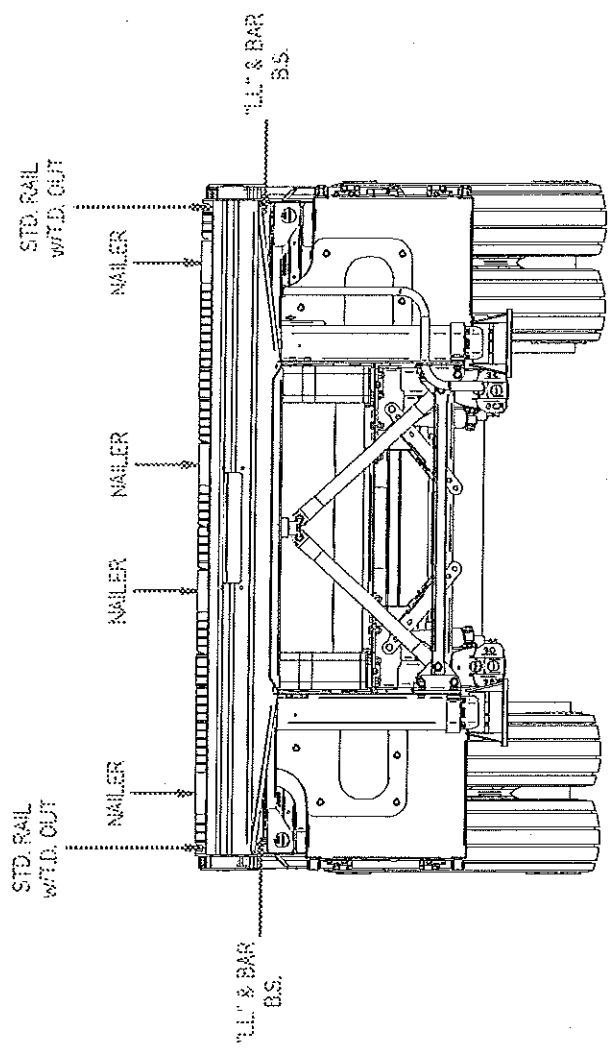
52K, 53' FLATBED
24" PIN, TANDEM FRONT SLIDER;
61"-122" SPACING

PAGE 3 OF 9

UNIT NUMBER: 75715-75726



REAR



FRONT

THIS DRAWING IS THE PROPERTY OF MAC MANUFACTURING INC.
AND SUBJECT TO RECALL AT ANY TIME.
DUPLICATION OR DISTRIBUTION WITHOUT PERMISSION IS
PROHIBITED.

UNLESS OTHERWISE SPECIFIED DIMENSIONS ARE IN INCHES
ANGLES -2° FRACTIONS 3/16 DECIMALS: ±0.02

MAC MANUFACTURING INC.

52K, 53' FLATBED
24" PIN, TANDEM FRONT SLIDER,
61"-122" SPACING

DRAWN: PEM DATE: 1/9/2023

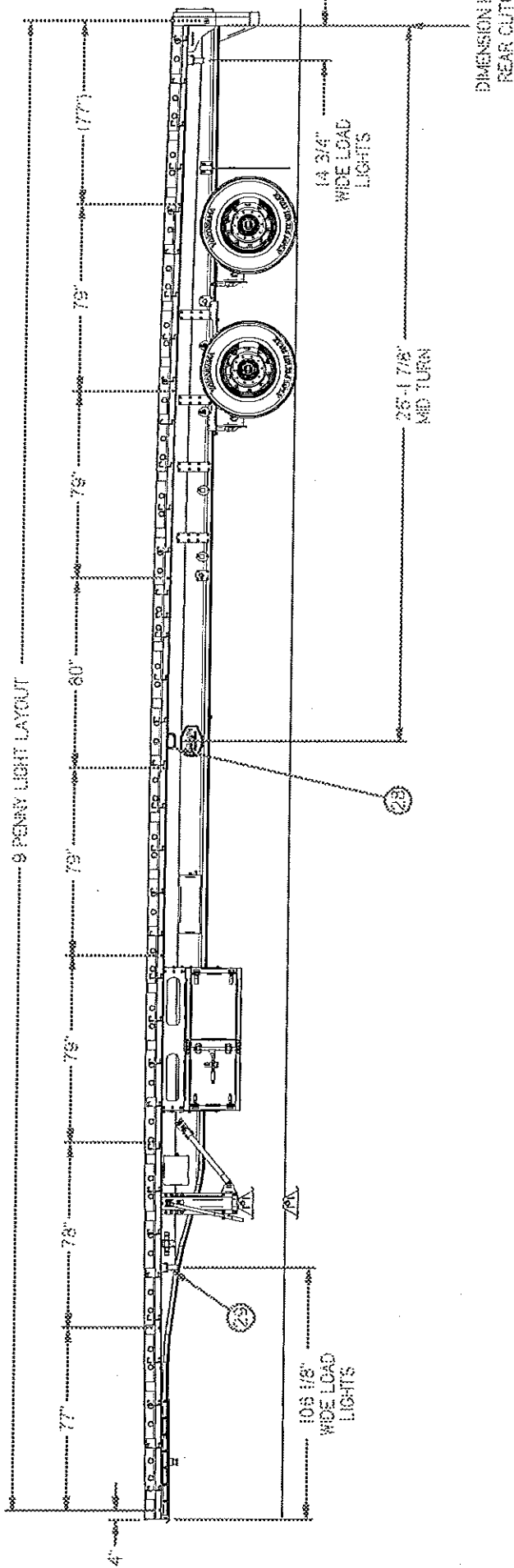
REVISION: 1

PAGE 4 OF 9

UNIT NUMBER: 75715-75726

REV.	DATE	RELEASED TO PRODUCTION	N/A	PEM
		REASON FOR CHANGE	ECN #	BY
1	1/9/2023			

9 PONY LIGHT LAYOUT



THIS DRAWING IS THE PROPERTY OF MAC MANUFACTURING INC. AND SUBJECT TO RECALL AT ANY TIME. DUPLICATION OR DISTRIBUTION WITHOUT PERMISSION IS PROHIBITED.

UNLESS OTHERWISE SPECIFIED DIMENSIONS ARE IN INCHES ANGLES -2° FRACTIONS 4/16 DECIMALS .5002

DRAWN: PEM DATE: 1/9/2023 REVISION: 1

MAC MANUFACTURING INC.

52K 53' FLATBED
24" PIN, TANDEM FRONT SLIDER,
61"-122" SPACING

PAGE 7 OF 9

UNIT NUMBER: 75715-75726

1	1/9/2023	RELEASED TO PRODUCTION	N/A	PEM
REV.	DATE	REASON FOR CHANGE	ECN #	BY